



STANISLAUS RESEARCHER

Genealogical Society of Stanislaus County

August 2014

Volume 36, Number 8

In this Issue

A Word from Your President.....	1
August Program	1
Early American Cookery	2
Part Two - Baby Names	3
RECEIPTS — RECIPES	5
GSSC Jackets and T-Shirts order form	7
2015 Salt Lake City LDS Library Trip	8
USGS Historical Topographic Map Explorer	10

August Program

August 19, 2014

7:00 PM	Millie's Minutes	Millie Starr
7:10 PM	One Step Webpages: A Hodgepodge of Lesser Known Gems by Stephen P Morse	
	See below for the description of his presentation.	

A WORD FROM YOUR PRESIDENT

Greetings:

I hope those of you who receive the Researcher by email enjoyed the special color edition distributed in July. It served two purposes; first as a method to share the great work extended in our behalf by the Salt Lake City LDS Library Trip Committee which included some excellent color photographs and second to kick off the advertising for the 2015 LDS Library Trip. You will find the announcement for that trip attached. If you have never gone, you do need to go. If you have been before, it is now time to go again. This committee has their act together and you will not be displeased.

By now you should also be aware of two happens in the ancestry.com world. First is their curtailment of their support for yDNA and mtDNA testing. They will be continuing the autosomal test and support. They have given a reprieve for the final date for you to move your test results to another company before they get dumped. The second is the DDoS attack to ancestry.com, Family Tree Maker, Rootsweb and some of their other subsidiaries. I was online with open files connected to both ancestry.com and Family Tree Maker and appear to have lost one major tree sans what I had backed up earlier in the week

I convinced a family member to move all of her DNA testing business to another company. This will be thoroughly covered at our October DNA Seminar. The DDoS attack stresses the need to regularly back up your files to a safe and secure location. I could have lost 33 years of research had I not done so. As it is I did lose a couple of days work between the two files. When ancestry.com got my FTM 2014 program running (it is still sick and unhappy) one of my two missing trees reappeared even though an earlier complete search of all my FTM files failed to locate it in my computer or external drives.

Respectfully,
Lewis M. Ruddick

August Program – Welcome Back Stephen P Morse

By Bev Johnson

How fortunate we are to have the opportunity to spend another evening with Stephen P Morse, nationally recognized for all things genealogy. A speaker in high demand, we are fortunate to have him spend an evening with us. Steve's program will address "One Step Webpages: A Hodgepodge of Lesser Known Gems". I suspect that in the question and answer period, you just may find the hook you were looking for. In advance, thank you for supporting our Genealogical Society of Stanislaus County with your attendance.

Early American Cookery

Ice Cream with President Thomas Jefferson



Ice cream frequently appears in visitors' accounts of meals with Thomas Jefferson. One visitor commented: "Among other things, ice-creams were produced in the form of balls of the frozen material inclosed in covers of warm pastry, exhibiting a curious contrast, as if the ice had just been taken from the oven."

Jefferson was able to enjoy ice cream throughout the year because ice was "harvested" from the Rivanna River in winter and taken to the Monticello ice house, which held sixty-two wagon-loads. The ice house located in Monticello's north dependency wing was used throughout the year primarily to preserve meat and butter, but also to chill wine and to make ice cream. In 1815, Jefferson noted, the ice supply lasted until October 15.

While George Washington's papers contain a prior reference to an ice cream maker, the first American recipe for the dish is in Jefferson's hand:

Ice Cream.

- 2. bottles of good cream.
- 6. yolks of eggs.
- 1/2 lb. sugar

mix the yolks & sugar

put the cream on a fire in a casserole, first putting in a stick of Vanilla.

when near boiling take it off & pour it gently into the mixture of eggs & sugar.

stir it well.

put it on the fire again stirring it thoroughly with a spoon to prevent it's sticking to the casserole.

when near boiling take it off and strain it thro' a towel.

put it in the Sabottiere*

then set it in ice an hour before it is to be served. put into the ice a handful of salt.

put salt on the coverlid of the Sabottiere & cover the whole with ice.

leave it still half a quarter of an hour.

then turn the Sabottiere in the ice 10 minutes

open it to loosen with a spatula the ice from the inner sides of the Sabottiere.

shut it & replace it in the ice

open it from time to time to detach the ice from the sides

when well taken (prise) stir it well with the Spatula.

put it in moulds, justling it well down on the knee.

then put the mould into the same bucket of ice.

leave it there to the moment of serving it.

to withdraw it, immerse the mould in warm water, turning it well till it will come out & turn it into a plate.



The original recipe is found in the Jefferson Papers collection at the Library of Congress.

<http://www.monticello.org/site/jefferson/home-activity-0>

Part Two - Baby Names: Names that morphed from blue to pink

Posted September 9, 2013

by Pamela Redmond Satran

<http://nameberry.com/blog/unisex-baby-names-names-that-morphed-from-blue-to-pink>



Lindsay

100% male in 1880, 100% female in 2012

It began flirting with androgyny in the late 1940s but tipped permanently to the female side in 1966. The Lindsey spelling crossed over in 1969.

London

100% male in 1886, 87% female in 2012

London was used for both sexes throughout the 1960s, 70s, and 80s, but crossed mostly to the girls' side in 1990.

Lynn

86% male in 1880, 78% female in 2012

In 1942 it was 56% female

Madison

100% male in 1880, 100% female in 2012

A quietly-used name almost always for boys until 1986, when Splash made it a female star.

Marley

100% male in 1914, 87% female in 2012

Very quietly used, mostly for boys, until the mid-1960s when it emerged as mostly a girls' name.

Mckenzie

100% male in 1917, 99% female in 2012

There were no female McKenzies until 1975, and then by 1976 it was two-thirds female.

Mckinley

100% male in 1890, 89% female in 2012

Mckinley crossed the gender divide permanently in 1998, thanks to the popularity of both Mackenzie and Kinley.

Meredith

100% male in 1883, 100% female in 2012

Although the earliest Merediths were male, the name gained significant female use from 1910 on and crossed the gender line permanently in 1921.

Michele

100% male in 1905, 86% female in 2012

Michele's early use as a male name can be pegged to ethnicity; it crossed to majority female in 1931 in the US.

Milan

100% male in 1885, 72% female in 2012

1996 was when Milan hit the 50% girls mark

Monroe

100% male in 1880, 78% female in 2012

This longtime male name only began a significant shift to the girls' side in 2009.

Morgan

100% male in 1880, 89% female in 2012,

With the rise of actress Morgan Fairchild, tipped in 1980 to 60% female

Paris

100% male in 1991, 93% female in 2012

This mythological male name first achieved majority-female status in the early 1960s, but didn't become a mostly-girls' name until the 1980s.

Payton

100% male in 1880, 83% female in 2012

Payton and Peyton both became used more often for girls than boys in 1992, though the Payton spelling is now 83% female while Peyton is 68% female.

Presley

100% male in 1880, 92% female in 2012

Spiked from mostly male to 80% female in 1990

Quinn

100% male in 1915, 86% female in 2012

The Glee character made this 51% female in 2010

Reagan

100% male in 1913, 93% female in 2012

Tipped toward the female side in 1973 with the popularity of The Exorcist.

Reese

100% male in 1880, 84% female in 2012

Reese did not become used for more girls than boys until 2003, with the rise of Reese Witherspoon's celebrity.

Sandy

100% male in 1880, 91% female in 2012

In 1935, Sandy was 50/50.

Shannon

100% male in 1881, 78% female in 2012

Shannon crossed the 50% mark for the first time in 1929 and within the next decade became primarily a girls' name.

Shelby

100% male in 1880, 100% female in 2012

In 1936, Shelby jumped from a mostly-male to an 88% female name.

Shelly

100% male in 1882, 100% female in 2012

1937 was the year Shelly became 51% female

Skylar

100% male in 1959, 88% female in 2012

In 1994, Skylar crossed to 52% female. The Skyler spelling has never been majority female.

Stacy

100% male in 1880, 91% female in 2012

Stacey crossed the gender line permanently in 1952.

Stevie

100% male in 1919, 83% female in 2012

Rocker Stevie Nicks tipped this name to the girls' side in 1983

Sydney

100% male in 1880, 98% female in 2012

Sydney began to be used significantly for girls in the 1930s and crossed the halfway line permanently in the early 1940s.

Taylor

100% male in 1881, 85% female in 2012

1990 was the year Taylor became 52% female

Whitney

100% male in 1884, 99% female in 2012

Whitney crossed the line in 1962, when it jumped from 41% to 72% female.

Part 1 is found in issue Vol 36 No 6 As I prepared this article for insertion into our newsletter I was surprised how many of these forenames I found in my family tree on both male and female family members. Now I have some historical references. Editor

Perhaps this is Why Some of Our Ancestors Had Short Life Spans

Provided by Millie Starr

RECEIPTS — RECIPES

From Revolutionary War pension file of Furnafold Cannon

Direrction for the yellow

Water First one pint

Of salf sope one spoon

Ful of coppers one spoon

Ful of dog wood wood root

Bilde into three Quorts

Of water- - - - -

Second one pint of

salf sope one spoonful

Coppers one spoon ful dog

Wood root Bark one

Spoon full of wilde

Cerry tree Bark Bilde

Strong in to three Quarts

of water

~~~~~  
My interpretation-

Directions for the Yellow Water.

First one pint of soft soap, one spoonful of coppers, one spoonful od dog wood root. Boiled into three quarts of water- - - - -

Second one pint of soft soap one spoonful coppers, one spoonful dog wood root bark, one spoonful of wild Cherry tree bark. Boiled strong into three quarts of water.

#### NEW RECEIPT IN A DIFFERENT HANDWRITING

Receipt for the Grivil...

Take three egg shells and...

Scorch them Brown by the...

Fire and them beaten fine...

Take one Gun flint and ...

Soap the hath Clean and.

Put it down and lay one

Brick on the f flint and

Make A oak fire on it

And keep it Burning

All day and at night

It will be wite as chalk

And the beat it fine

Have as of each as will

Lay on the pint of Case knife



And put it into one spoon  
 Full of honey and stir it up  
 together and then take one  
 of flax seed and put it  
 In one pint of water  
 and Jest let it boil and  
 Then pour the teso of and  
 Mix it A up together and  
 Then Drink it all up at  
 Drink and then Cover up  
 Worm and you will find  
 Help in tow three ours



~~~~~  
 Some harder to read and some easier--my interpretation.

Recipe for the Gravel

Take three egg shells and scorch them brown by the fire and then beaten fine. Take one gun flint and soap the hearth clean and put it down and lay one brick on the flint and make an oak fire on it and keep it burning all day and at night. It will be white as chalk and then beat it fine.

Have as of each as will lay on the point of case knife and put it into one spoonful of honey and stir it up together and then take one of flax seed and put it in one pint of water and just let it boil and then pour the tea off and mix it up together and then drink it all up at (once)

Drink and then cover up warm and you will find help in two three hours.

And then if this will
 Not do one gallon lime
 One gallon of water
 And Stir it up well
 Together and let it settel
 And then pour it of and
 Bottle it up tight and
 Take three pints a day
 one in the morning noon and
 night and put one spoon
 ful of honey into ever pint.

~~~~~  
 Almost a continuation of the previous one, I guess in case the 'you will find help,' does not work.

And then if this will not do, one gallon of lime, one gallon of water and stir it up well together and let it settle and then pour it off and bottle it up tight and take three pints a day one in the morning, noon and night and put one spoonful of honey into every pint.

My Conclusions

Gravels is an archaic term for kidney disease. Because this was preserved in this booklet with the Yellow Water recipe, I am inclined to think that all were for kidney ailments.

---

Following is the Order Form for the GSSC T-Shirts, Jacket and Bag. Please get the order submitted as soon as possible so that Ellen can complete her order.



## Genealogical Society of Stanislaus County

### Order form – Jacket, Polo, T-shirt and Bag

| Item        | Color    | Circle<br>Size      | Quantity       | Cost    | Total   |
|-------------|----------|---------------------|----------------|---------|---------|
| Jacket      | Gray     | S M L XL<br>2XL 3XL | _____<br>_____ | \$38.00 | \$_____ |
| Polo        | Green    | S M L XL<br>2XL 3XL | _____<br>_____ | \$27.00 | \$_____ |
|             | Burgundy | S M L XL<br>2XL 3XL | _____<br>_____ |         |         |
| T-Shirt     | Green    | S M L XL<br>2XL 3XL | _____<br>_____ | \$20.00 | \$_____ |
|             | Burgundy | S M L XL<br>2XL 3XL | _____<br>_____ |         |         |
| Bag         | Charcoal |                     | _____          | \$14.00 | \$_____ |
| Total Order |          |                     |                |         | \$_____ |

Make checks payable to GSSC mail to Ellen Reesh, 1504 Jacquelyn Way, Modesto CA 95355 or bring to August 19<sup>th</sup> general meeting

Name: \_\_\_\_\_

Phone : \_\_\_\_\_

Email: \_\_\_\_\_

***Order deadline is August 19, 2014 all orders must be paid in advance  
Thank you, Ellen Reesh      Questions - ereesh@gmail.com or 577-0967***



# The 2015 Salt Lake City Research Trip

Genealogical Society of Stanislaus County  
*Sunday, April 19, to Sunday, April 26, 2015*



Family History Library, the world's largest genealogical library, in Salt Lake City

## All this is included:

- ✓ Bus transportation to and from the airport
- ✓ Your airfare
- ✓ Baggage handling
- ✓ Tips
- ✓ Your room at the hotel closest to the library
- ✓ Monday night group dinner
- ✓ Expert research assistance at the library

## Space is Limited

To make your reservation, send the completed information form and your \$200 deposit by October 1st

## Estimated trip costs at this time are

|                          |        |
|--------------------------|--------|
| Single Room              | \$1225 |
| Double Room (per person) | \$ 900 |
| Triple Room (per person) | \$ 800 |
| Quad Room (per person)   | \$ 725 |



# The 2015 GSSC Salt Lake City Research Trip

*April 19-26, 2015*

**We hope you will join us on the 2015 Salt Lake City Research Trip. Prior to the trip we will have an orientation for people who have not gone on the trip with us before.**



Some of the computers, books and microfilm readers at the Family History Library

At the Family History Library you will have access to

- More than 2.4 million microfilmed rolls of genealogical records
- More than 727,000 microfiche
- More than 356,000 books, serials and other formats
- More than 4,500 periodicals
- More than 3,725 electronic resources
- Records from more than 110 countries, territories and possessions
- Research assistance from the very knowledgeable staff

Please note: Your airline reservation will not be made without your \$200 deposit. Your remaining balance will be due in five equal payments November 1<sup>st</sup> to March 1<sup>st</sup>. Any remaining payment, because of unexpected increases in travel costs, will be due April 1<sup>st</sup>. No refunds after February 15. We are searching for the lowest possible prices for this trip.

Questions? Contact the GSSC Salt Lake City Research Trip Committee: Lisa Bruk ([lbruk@sbcglobal.net](mailto:lbruk@sbcglobal.net)), Bev Johnson ([jbevjohnson1@att.net](mailto:jbevjohnson1@att.net)), Sharon Hawley-Crum ([sjhawley@sbcglobal.net](mailto:sjhawley@sbcglobal.net)), Judith Welch ([welchjudith@yahoo.com](mailto:welchjudith@yahoo.com)) or Wayne Black ([1waynethepain@sbcglobal.net](mailto:1waynethepain@sbcglobal.net))

---

Please send your \$200 deposit payable to GSSC and this completed form to Bev Johnson, 1924 Red Oak Dr., Modesto, CA 95354 by October 1st

Full Legal Name (as it is on your driver's license) \_\_\_\_\_

Address \_\_\_\_\_

City \_\_\_\_\_ State \_\_\_\_\_ Zip Code \_\_\_\_\_

Phone \_\_\_\_\_ Cell Phone \_\_\_\_\_

Email Address \_\_\_\_\_

Date of Birth (required for the airline reservation) \_\_\_\_\_

Roommate(s) \_\_\_\_\_

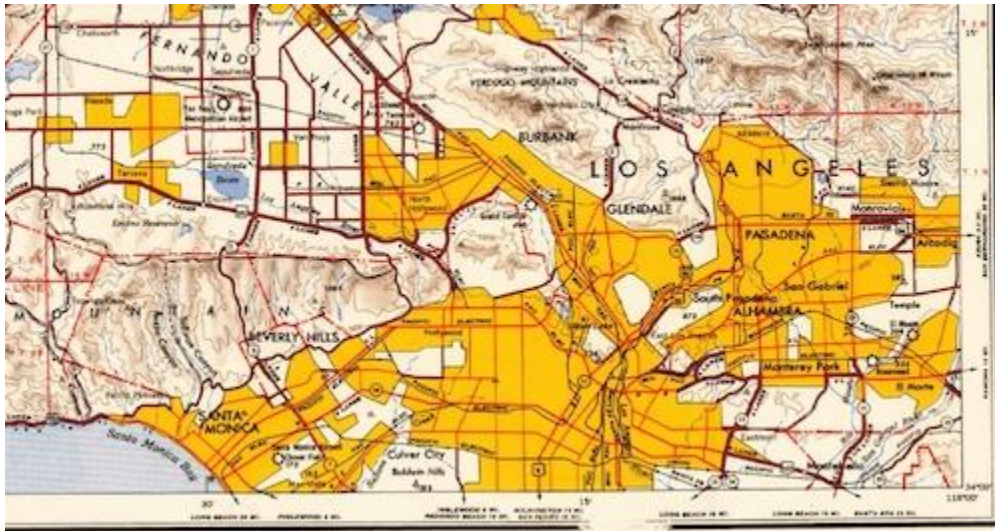
I need a roommate(s) \_\_\_\_\_ I am requesting a room for 1 2 3 4 (Please circle)

The following article is from Eastman's Online Genealogy Newsletter and is copyright by Richard W. Eastman. It is re-published here with the permission of the author. Information about the newsletter is available at <http://www.eogn.com> July 21, 2014

## USGS Historical Topographic Map Explorer

Dick Eastman · July 21, 2014 ·

This has to be one of the best tools I have seen for finding old maps. The United States Geological Survey (USGS) recently launched a GIS-based website that allows viewers access to more than 178,000 USGS maps, dating back to 1884. The maps can be searched by location by starting with current maps. If you like old maps as much as I do, you will want to check this out.



Click on the image to view a larger map of Los Angeles

I first looked at the online map for the place where I spend summers in Massachusetts. I was able to find the exact location. I then clicked on the location and a list of old maps appeared. I selected the oldest, a map from 1889. The 1889 map was downloaded to my computer as a PDF file within a few seconds. Clicking on the newly-downloaded file resulted in the entire map being displayed in my PDF viewer software.

I zoomed in and in and was soon able to see a very detailed map of my neighborhood as it existed in 1889.

The available maps will vary. The map I looked at, a USGS map created in 1889, did not show houses. (My house wasn't built until many years later.) However, it was interesting to see the nearby railroad tracks, a nearby pond, and several streams haven't moved in the last 125 years. However, the name of the railroad has changed. It was shown on the map as the New York, New Haven, and Hartford Railroad. A quick search on Wikipedia shows that the railroad line, founded by J.P. Morgan, went bankrupt in 1935. That was news to me! Other railroads purchased bits and pieces of track from the bankruptcy court and the railroad line is still in operation today by another railroad company but it only carries freight.

The USGS Historical Topographic Map Explorer may be found at <http://historicalmaps.arcgis.com/usgs>. An article at <http://goo.gl/PMzI74> provides more information about the project.

My thanks to newsletter reader Brent Tarter for telling me about this new online resource.

## Membership Information

- Dues: Single membership, \$20.00 per year      Family membership, \$27.50 per year
- Stanislaus Researcher Published 10 times per year by Genealogical Society of Stanislaus County, P. O. Box A, Modesto, CA 95352-3660. **\$5.00 additional for hard copy** otherwise delivered via email. Submit articles for publication to the editor via email: [lrduddick@ix.netcom.com](mailto:lrduddick@ix.netcom.com) by the **15th of each month.**
- Address changes: Send address, email and phone number changes to Maybelle Allen at:  
 US Mail: Maybelle Allen c/o GSSC, P. O. Box A, Modesto, CA 95352-3660  
 Email: [gssc@att.net](mailto:gssc@att.net)  
 Telephone: 209-523-0593 (Maybelle Allen)
- GSSC web page: <http://www.cagenweb.com/lr/stanislaus/gssc.html>.  
 The newsletter is posted at this website, along with other interesting society-related items.
- General meeting: 7:00 p.m. on the 3rd Tuesday of each month, except July and December at the Trinity Presbyterian Church at 1600 Carver Rd., Modesto, CA.
- Board meeting: 7:00 p.m. on the 2nd Monday of each month the Trinity Presbyterian Church at 1600 Carver Rd., Modesto, CA.

| 2014 Officers      |                    | 2014 Standing Committee Chairs |                                    |
|--------------------|--------------------|--------------------------------|------------------------------------|
| President          | Lewis M. Ruddick   | Acquisitions                   | Ellen Reesh                        |
| 1st Vice President | Bev Johnson        | Audit                          | David Wolff                        |
| 2nd Vice President | Jeff Wells         | Budget                         | Sharon Hawley-Crum                 |
| Secretary          | Cyndy Bray         | Four Generation Charts         | Donna Burleaud                     |
| Treasurer          | Sharon Hawley-Crum | Historian & Sunshine           | Judith Welch                       |
| Director at Large  | Jay Mirza          | Membership                     | Maybelle Allen                     |
| Director at Large  | Pamela Atherstone  | Memorial Day                   | Janet Lancaster/Millie Starr       |
| Director at Large  | Cleda Lane         | Mentor                         | Janet Lancaster/Marilyn Belleville |
| Director at Large  | Angela Kraft       | Newsletter                     | Lewis M. Ruddick                   |
| Director at Large  | Linda Oneth        | Planning                       | Lewis Ruddick/Beverly Graham       |
| Past President     | Vicky Wolff        | Program                        | Bev Johnson                        |
|                    |                    | Publicity                      | Ellen Reesh                        |
|                    |                    | Queries                        | Charlie Tieman                     |
|                    |                    | Refreshments                   | Jackie Niemeyer                    |
|                    |                    | Registrar                      | Dorothy Winke                      |
|                    |                    | Research & Publication         | Millie Starr                       |
|                    |                    | Research Trips: Sutro/Archives | vacant                             |
|                    |                    | Research Trips: Salt Lake City | Lisa Bruk                          |
|                    |                    | Seminar & Workshop             | Jeff Wells                         |
|                    |                    | Special Collections Room       | Marilyn Belleville                 |
|                    |                    | Social Media                   | Angela Kraft                       |
|                    |                    | Greeter                        | Marge Scheuber                     |

Updated 7-22-2014

**We have 163 members for 2014**



Genealogical Society of  
Stanislaus County  
P.O. Box A  
Modesto, CA 95352-3660

